



JiaLin Hau (Monkie)
20 y.o
Junior
Applied Maths in Econ

Why Technical Analysis?

Fundamental analysts study everything from the overall economy and industry conditions to the financial condition and management of companies.

Technical analysis is the evaluation of securities by means of studying statistics generated by market activity, such as past prices and volume.

- Unbiased
- Prediction
- Entry and Exit Level
- Emotional control



Indicator

- **Fractals**
- **Stochastic Oscillator**
- **Ichimoku Kinko Hyo**

WTI(W&T Offshore)

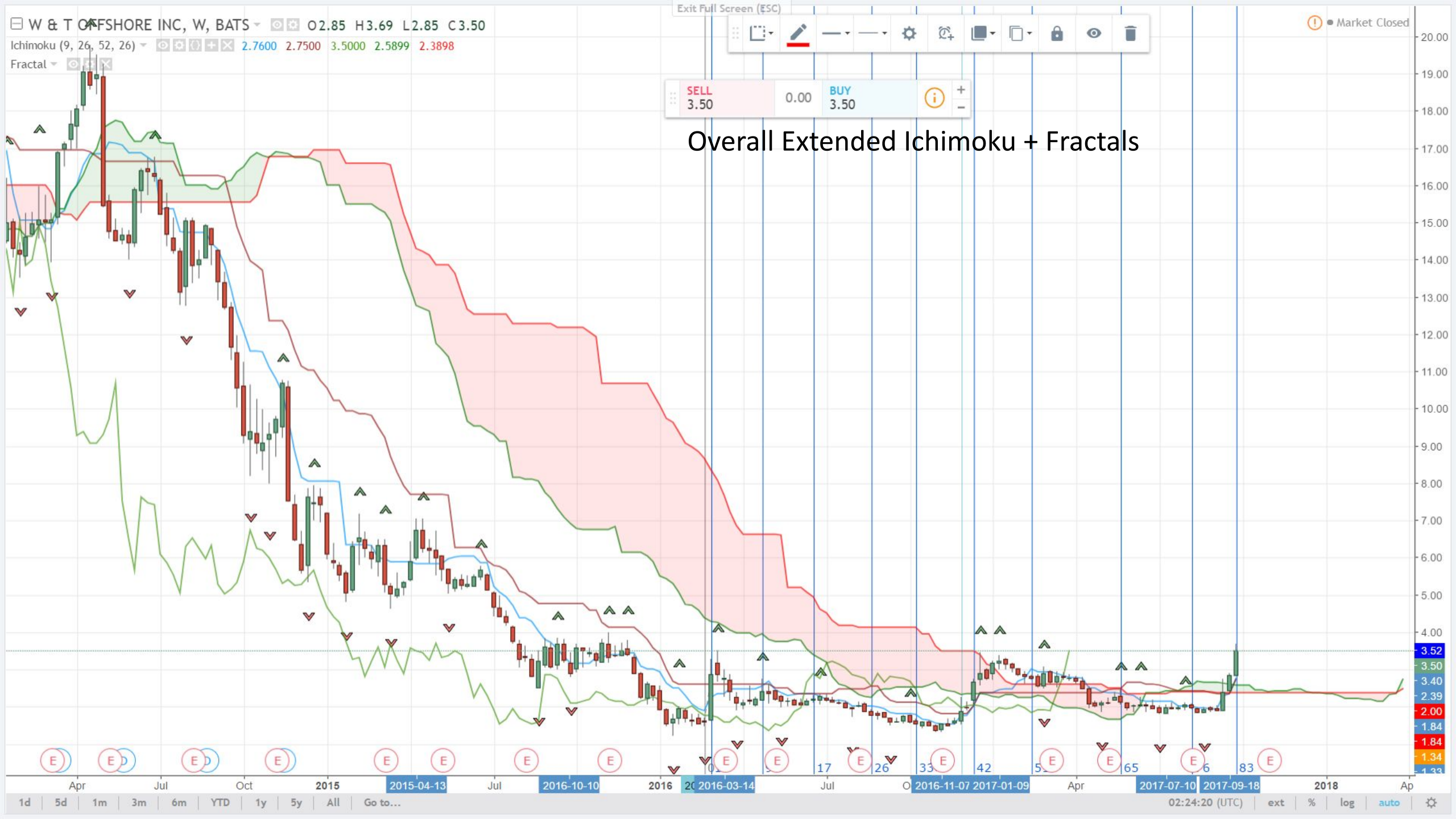
- Average volume 2.4Mil
- 52 Weeks range \$1.31-3.69
- Price when I analyze \$3.50
- Current Price ~\$3.10





Ichimoku Kinko Hyo

















Fibonacci Extension Risk Reward

- Currently around \$3.10, entry at \$3.30.
- According to Fibonacci Extension, ideal target will be \$10.60.
- Trading Strategy : Trailing Take Profit (TTP), ideal point to take quarter share in profit \$5.15, \$7.25, \$9.32 which provide \$1.85, \$3.95, \$6.02 profit per share respectively.
- Stop Loss at \$1.66 risking a total of (\$1.64) per share.

Conclusion

- According to Fractals, indicate a bullish sign that we can go higher high in the future.
- According to STOCH 2 weeks ago it is not a good entry.
 - Now is a better entry. However me personally will wait until if break \$3.30 or a bounce appear at \$2.80.
- According to Ichimoku there is a possible of strong bullish trend of this stock.

Strong Bullish Trend

